

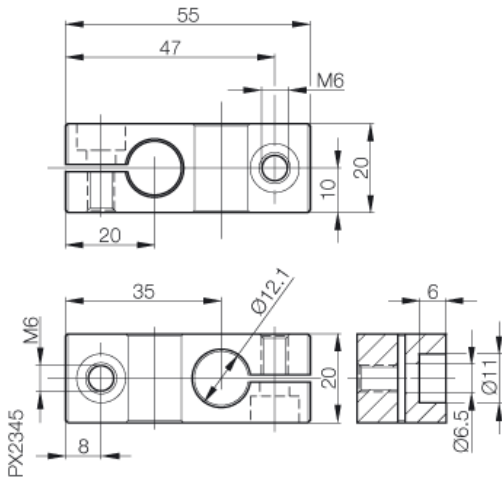
## Accessories: Mounting unit BMS CC-M-D12-B-00

### Common Data

Version Cross-connector for 2 rods  $\varnothing 12$  mm

### Mechanical Data

Measurements WxHxD or Dia x D 55x20x20  
Material Aluminium  
Mounting clamping with screw M6x14



Datasheet number::

Definitions see general catalog.  
If not otherwise noted, ratings according to  
IEC 60947-5-2 (DIN EN60947-5-2)

Balluff GmbH  
Schurwaldstrasse 9  
73765 Neuhausen a.d.F.  
Phone (07158) 173-0 Fax (07158) 5010

Datenblatt by CD-ROM - 04/2007

**BALLUFF**  
sensors worldwide